



CLUTCH ACTIVATED & PEDESTAL PUMPS

HYPRO PUMPS

12-VOLT CLUTCH ACTIVATED PEDESTAL PUMPS					
Part#	Description	Max. RPM	Max. GPM	Max. PSI	Price
9262C-C	Pedestal mount, cast iron pump w/ 12 volt heavy duty clutch w/ 5" diameter A-section pulley, 1 1/4" NPT inlet / 1" outlet, counterclockwise rotation	5000	103	170	\$836.36
9262S-C	Same as 9262C-C except stainless steel pump	5000	103	170	\$1,414.19
9263C-C	Pedestal mount, cast iron pump w/ 12 volt heavy duty clutch w/ 5" diameter A-section pulley, 1 1/2" NPT inlet / 1 1/4" outlet, counterclockwise rotation	5000	140	170	\$843.57
9263S-C	Same as 9263C-C except stainless steel pump	5000	140	170	\$1,433.76
9263C-CR	Pedestal mount, cast iron pump w/ 12 volt heavy duty clutch w/ 5" diameter A-section pulley, 1 1/2" NPT inlet / 1 1/4" outlet, clockwise rotation	5000	140	170	\$853.87
9263S-CR	same as 9263C-CR except stainless steel pump	5000	140	170	\$1,444.06
3430-0332	Seal and O-Ring Repair Kit				\$50.70
3430-0589	Silicon Carbide Seal Kit				\$198.28



9200 SERIES SELF-PRIMING 12 VOLT CLUTCH ACTIVATED PEDESTAL PUMPS					
Part#	Description	Max. RPM	Max. GPM	Max. PSI	Price
9263C-C-SP	Pedestal mount, cast iron pump w/ 12 volt heavy duty clutch with 5" diameter A-section pulley, 1 1/2" NPT inlet 1 1/4" outlet, counterclockwise rotation	5000	120	157	\$1,212.31
9263C-CR-SP	Pedestal mount, cast iron pump w/ 12 volt heavy duty clutch with 5" diameter A-section pulley, 2" NPT inlet 2" NPT outlet, clockwise rotation	5000	140	155	\$1,222.61
3430-0589	Silicon Carbide Seal Kit				\$198.28



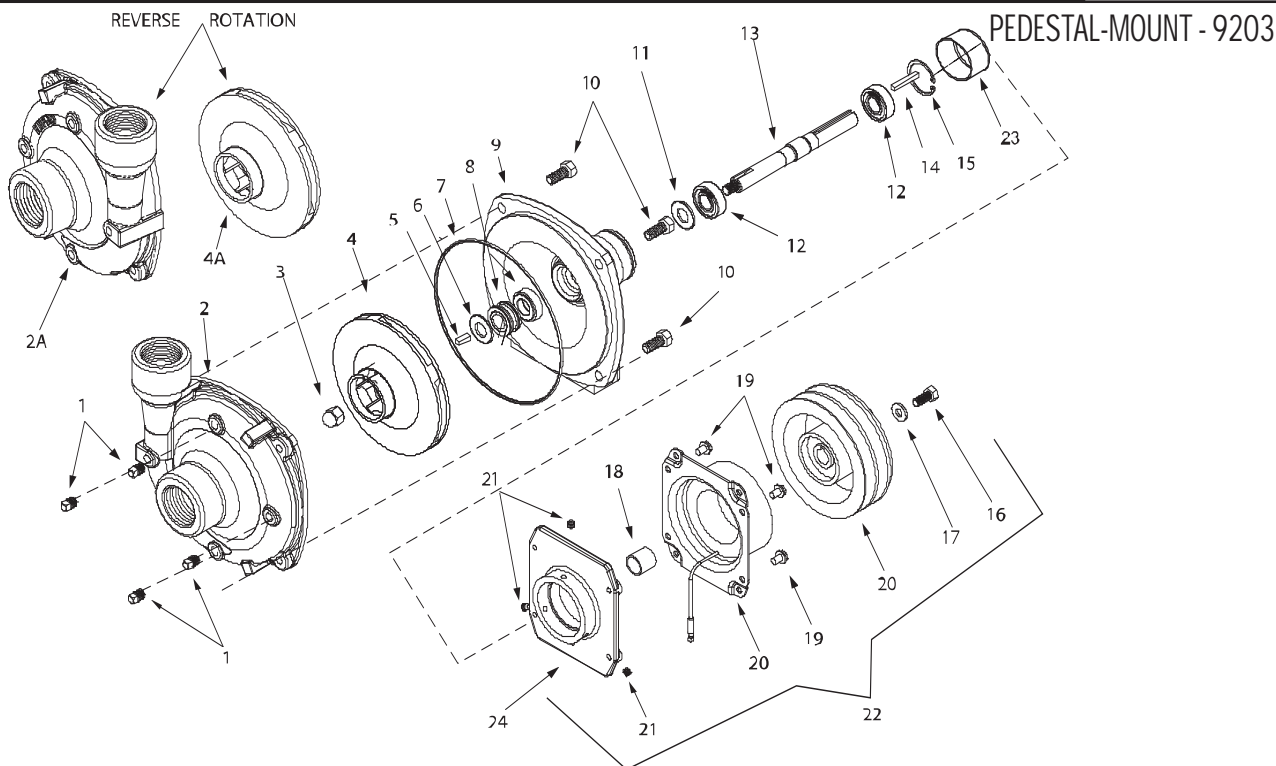
9200 SERIES PEDESTAL-MOUNT PUMPS CAST IRON & STAINLESS STEEL					
Part#	Description	Max. RPM	Max. GPM	Max. PSI	Price
9202C	Pedestal mount, cast iron pump w/ 5/8" solid shaft and Viton shaft seal, 1 1/4" NPT inlet / 1" NPT outlet	6000	103	170	\$455.26
9202S	Pedestal mount, stainless steel pump w/ 5/8" solid shaft & Viton shaft seal, 1 1/4" NPT inlet / 1" NPT outlet	6000	103	170	\$993.95
9203C	Pedestal mount, cast iron pump w/ 5/8" solid shaft and Viton shaft seal, 1 1/2" NPT inlet / 1 1/4" NPT outlet	6000	140	170	\$461.44
9203S	Pedestal mount, stainless steel pump w/ 5/8" solid shaft Silicon Carbide shaft seal, 1 1/2" NPT inlet / 1 1/4" NPT outlet	6000	140	170	\$1,012.49
9203C-R	Pedestal mount, cast iron pump w/ 5/8" solid shaft, Viton seal, clockwise rotation, 1 1/2" NPT inlet / 1 1/4" NPT outlet	6000	140	170	\$471.74
9203S-R	Pedestal mount, stainless steel pump w/ 5/8" solid shaft, silicon carbide seal, clockwise rotation, 1 1/2" NPT inlet / 1 1/4" NPT outlet	5000	140	170	\$1,022.79
9204C	Pedestal mount, cast iron pump w/ 5/8" solid shaft, Viton shaft seal, 2" NPT inlet / 1 1/2" NPT outlet	4200	190	80	\$649.93
9205C	Pedestal mount, cast iron pump w/ 7/8" solid keyed shaft, Viton seal, 2" NPT inlet / 1 1/2" NPT outlet	4200	180	196	\$1,159.78
9206C	Pedestal mount, cast iron pump w/ 5/8" solid shaft, Viton shaft seal, 2" NPT inlet / 1 1/2" NPT outlet	4200	225	80	\$604.61
9206S	Pedestal mount, stainless steel pump w/ 5/8" stainless steel shaft, silicon carbide shaft seal, 2" NPT inlet / 1 1/2" NPT outlet	4200	225	80	\$1,210.25
3430-0332	Seal and O-Ring Repair Kit				\$50.70
3430-0589	Silicone Carbide Seal Kit				\$198.28
3430-0537	Seal and O-Ring Repair Kit (9205C only)				\$47.02
3430-0646	Silicone Carbide Seal Kit (9205C only)				\$208.47



PARTS BREAKDOWN ON PAGE 186



PUMP REPLACEMENT PARTS



Part#	Description	Price
3430-0589	Seal Kit for Stainless Series: (1)Ref. 7 - O-ring, (1)Ref. 8 - Mechanical Seal	\$198.28
3430-0332	Seal Kit for Cast Series: (1)Ref. 7 - O-ring, (1)Ref. 8 - Mechanical Seal, (1)Ref. 6 - Gasket	\$50.70

Ref No.	Qty	Part#	Description	Price
1	4	2406-0007	Drain Plug (Cast series)	\$.85
1	4	2406-0016	Drain Plug (316 Stainless Series)	\$7.53
2	1	0150-9000C	Pump Casing (Cast Series)	\$205.07
2	1	0150-9000S	Pump Casing (Stainless Series)	\$567.63
2A	1	0152-9000C	Pump Casing (Reverse, Cast Series)	\$194.88
2A	1	0152-9000S	Pump Casing (Reverse, Stainless Series)	\$605.02
3	1	2253-0002	Impeller Nut (Cast Series)	\$4.99
3	1	2253-0006	Impeller Nut (Stainless Series)	\$25.21
4	1	0401-9100P	Impeller (Nylon, Model 9203C)	\$43.05
4	1	0402-9100P	Impeller (Poly, Model 9203S)	\$47.59
4A	1	0404-9100P	Impeller (Reverse, Cast Series)	\$64.86
4A	1	0403-9100P	Impeller (Reverse, Stainless Series)	\$80.73
5	1	1610-0015	Key (Cast Series)	\$1.53
5	1	1610-0044	Key (Stainless Series)	\$13.88
6	1	1700-0100	Gasket (Cast Series)	\$4.25
7	1	1720-0083	O-Ring	\$3.00
8	1	2120-0008	Mechanical Seal (Buna-N, Optional)	\$26.06
8	1	2120-0009	Mechanical Seal (Cast Series)	\$44.75
8	1	3430-0589	Mechanical Seal (Stainless Series)	\$198.28

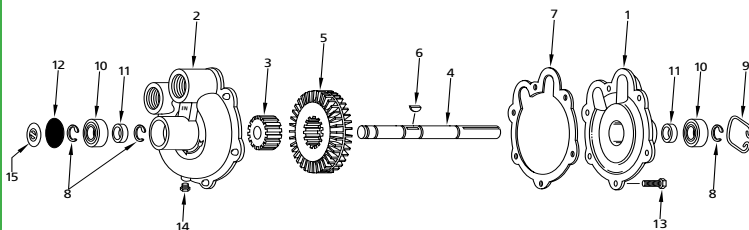
(Silicone Carbide, includes O-Ring Ref#5)

Ref No.	Qty	Part#	Description	Price
9	1	0750-9200C3	Mounting Flange (Cast Series)	\$152.96
9	1	0756-9200S	Mounting Flange (Stainless Series)	\$551.77
10	4	2210-0020	Bolt (Cast Series)	\$.79
10	4	2210-0125	Bolt (Stainless Series)	\$1.53
11	1	1410-0056	Slinger Ring	\$1.08
12	2	2000-0010	Ball Bearing	\$9.35
13	1	0505-9200	Pump Shaft	\$145.02
14	1	1610-0004	Key	\$1.36
15	1	1820-0013	Bearing Retainer	\$1.02
16	1	2210-0003	Bolt	\$.85
17	1	2270-0092	Retaining Washer	\$7.14
18	1	1410-0107	Spacer	\$17.56
19	4	N/A	Bolt (part of clutch assy)	N/A
20	1	2526-0012	Clutch	\$595.96
21	3	2230-0001	Set Screw	\$1.76
22	1	3430-0592	Clutch Kit	\$731.92
23	1	2300-0025	Protective Cover	\$3.40
24	1	0753-9200C	Mounting Bracket	\$125.76



9600C Turbine

Will NOT Interchange With Delavan Turbo 90



Ref No.	Qty	Part#	Description	Price
1	1	0150-9600C	Body	\$347.83
2	1	0250-9600C	Housing	\$367.09
3	1	1201-0015	Impeller Insert	\$126.90
4	1	0500-9600	Shaft, Stainless Steel, 15/16" Diameter 1/4" Keyway	\$110.47
5	1	0400-9600P	Impeller, Corrosion Resistant Valox	\$94.32
6	1	1610-0045	Key - Woodruff	\$10.03
7	1	1710-0015	Gasket	\$5.33
8	3	1810-0008	Retainer Ring - External	\$1.36
9	1	1820-0025	Retainer Ring - Internal	\$3.40
10	2	2008-0001	Sealed Ball Bearing	\$13.88
11	2	2112-0003	Seal - Viton	\$15.30
12	1	2300-0020	Bearing Cover	\$1.30
13	6	2210-0026	Screw, Hex Head	\$.85
14	1	2406-0007	Pipe Plug	\$.85
15	1	6031-0299	Decal	NA